

A Zither Symphony

III Theme

both G and Gm are needed - use lever

Etienne de Lavaulx

Andante *medium*

lever: Gm Dm Am Dm Gm C F Gm C

1st time *sim.*
2nd and last time *sim. except where written otherwise*
strum 1 (see foot note)

9 F C F Dm G C G C Am *sim.*

17 G Am Dm G C F Dm G C G *sim.*

26 C *dolce* Am F Am F Am F Am F G

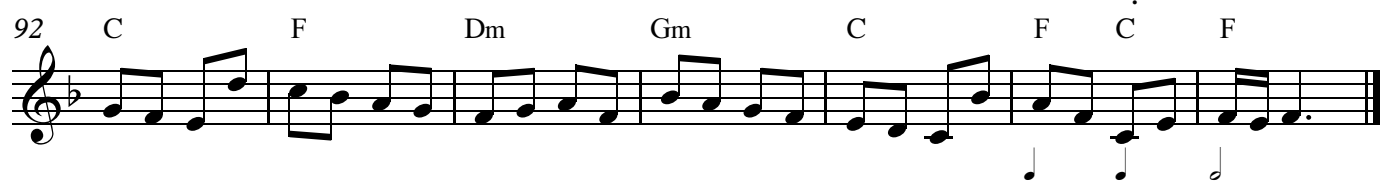
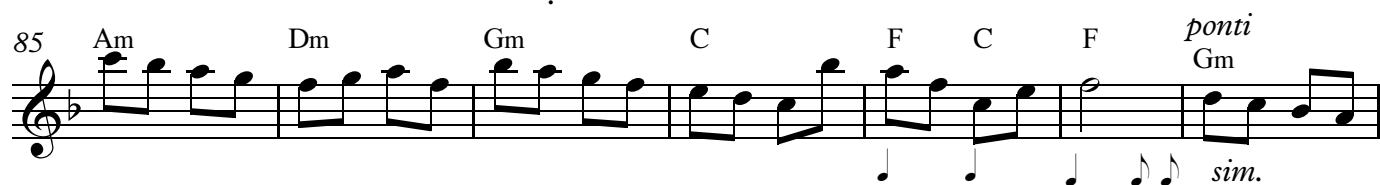
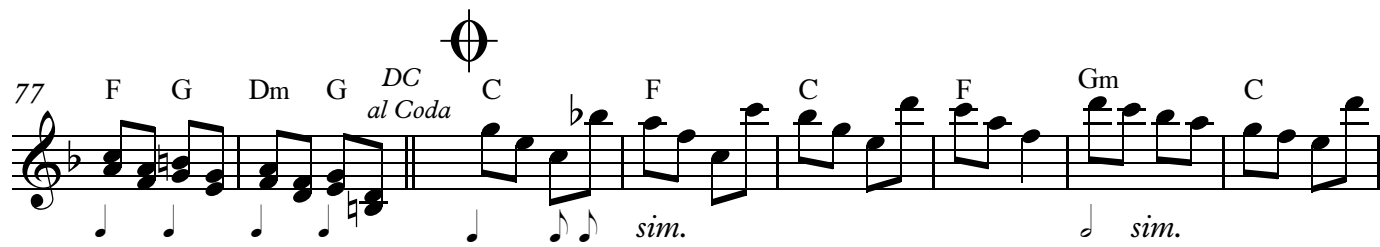
35 1. Dm G lever: G to Gm 2. Dm G Am G F G Dm G *ponti* Allegro Am

rit. *rall.* *sim. up to bar 67*
strum 2 (see foot note)

42 F G Am C

50 F C G

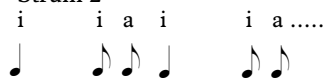
56 C F C G



Strum 1



Strum 2



rall.